









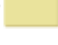

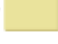
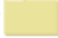


ACDS.1

ArtiosCAD Designer Solution

ArtiosCAD containers&Trays

<ul style="list-style-type: none">  Corrugated <ul style="list-style-type: none">  1,Artops CAD Corrugated ----- <table border="0" style="margin-left: 20px;"> <tr> <td style="text-align: right;">資料NO.</td> <td>ファイル名</td> </tr> <tr> <td style="text-align: right;">ACDS.1</td> <td>Artops CAD Corrugated & Trays</td> </tr> </table>  2,FEFCO <ul style="list-style-type: none">  FEFCO 200series ----- <table border="0" style="margin-left: 20px;"> <tr> <td style="text-align: right;">ACDS.2</td> <td>FEFCO 200series</td> </tr> </table>  FEFCO 300series ----- <table border="0" style="margin-left: 20px;"> <tr> <td style="text-align: right;">ACDS.3</td> <td>FEFCO 300series</td> </tr> </table>  FEFCO 400series ----- <table border="0" style="margin-left: 20px;"> <tr> <td style="text-align: right;">ACDS.4</td> <td>FEFCO 400series</td> </tr> </table>  FEFCO 500series ----- <table border="0" style="margin-left: 20px;"> <tr> <td style="text-align: right;">ACDS.5</td> <td>FEFCO 500,600series</td> </tr> </table>  FEFCO 600series ----- <table border="0" style="margin-left: 20px;"> <tr> <td style="text-align: right;">ACDS.6</td> <td>FEFCO 700,900series</td> </tr> </table>  FEFCO 700series ----- <table border="0" style="margin-left: 20px;"> <tr> <td style="text-align: right;">ACDS.6</td> <td>FEFCO 700,900series</td> </tr> </table>  FEFCO 900series ----- <table border="0" style="margin-left: 20px;"> <tr> <td style="text-align: right;">ACDS.6</td> <td>FEFCO 700,900series</td> </tr> </table>  2b,FEFCO(nur metrisch) ----- <table border="0" style="margin-left: 20px;"> <tr> <td style="text-align: right;">ACDS.7</td> <td>FEFCO nur metrisch200,400,700serie</td> </tr> </table> 		資料NO.	ファイル名	ACDS.1	Artops CAD Corrugated & Trays	ACDS.2	FEFCO 200series	ACDS.3	FEFCO 300series	ACDS.4	FEFCO 400series	ACDS.5	FEFCO 500,600series	ACDS.6	FEFCO 700,900series	ACDS.6	FEFCO 700,900series	ACDS.6	FEFCO 700,900series	ACDS.7	FEFCO nur metrisch200,400,700serie
資料NO.	ファイル名																				
ACDS.1	Artops CAD Corrugated & Trays																				
ACDS.2	FEFCO 200series																				
ACDS.3	FEFCO 300series																				
ACDS.4	FEFCO 400series																				
ACDS.5	FEFCO 500,600series																				
ACDS.6	FEFCO 700,900series																				
ACDS.6	FEFCO 700,900series																				
ACDS.6	FEFCO 700,900series																				
ACDS.7	FEFCO nur metrisch200,400,700serie																				
<ul style="list-style-type: none">  Folding Carton <ul style="list-style-type: none">  1,ArtiosCAD Folding Carton --- <table border="0" style="margin-left: 20px;"> <tr> <td style="text-align: right;">資料NO.</td> <td>ファイル名</td> </tr> <tr> <td style="text-align: right;">ACDS.8</td> <td>ArtiosCAD foldingCarton</td> </tr> </table>  2,ECMA ----- <table border="0" style="margin-left: 20px;"> <tr> <td style="text-align: right;">ACDS.9</td> <td>foldingCarton2,ECMA</td> </tr> </table> 		資料NO.	ファイル名	ACDS.8	ArtiosCAD foldingCarton	ACDS.9	foldingCarton2,ECMA														
資料NO.	ファイル名																				
ACDS.8	ArtiosCAD foldingCarton																				
ACDS.9	foldingCarton2,ECMA																				



■ 使用マシン

プリンター

UJF-6042

UV PRINTER



カッティングプロッタ

CFL-605RT



■ 使用インク

LH-100

■ 使用紙

コートボール紙 230g

■ 使用ラミネートフィルム

PPホットラミ 9327KA × 500 25μ

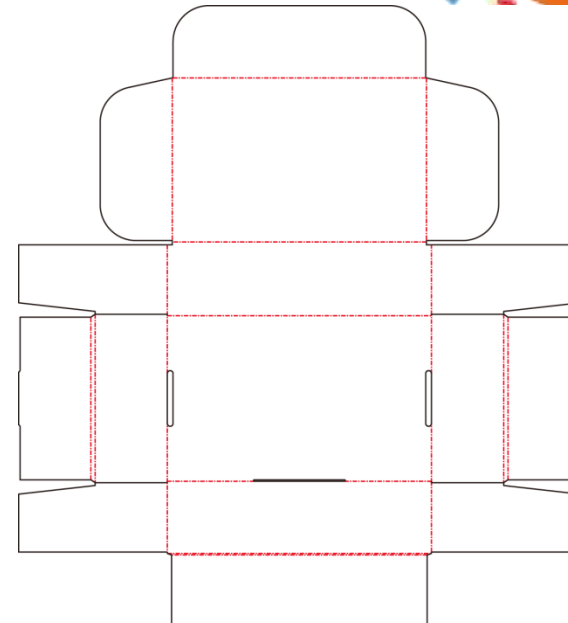
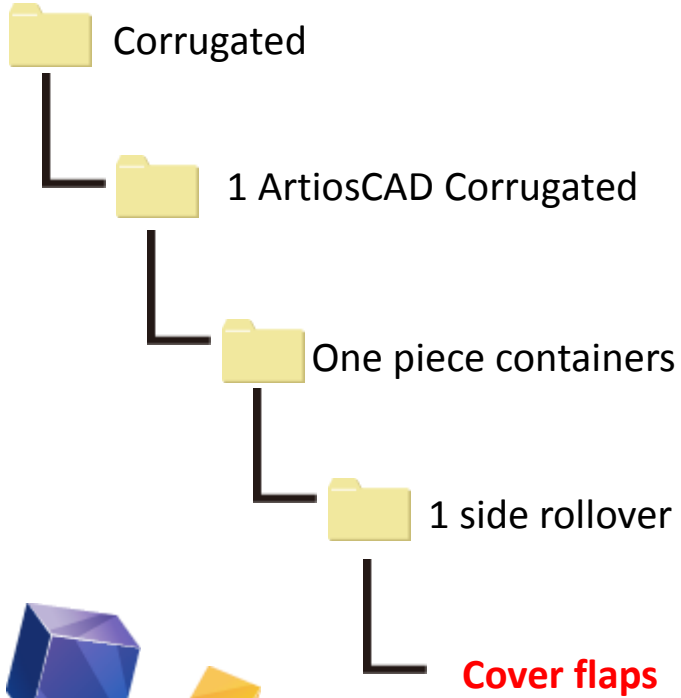
1 side rollover

ACDS.1-1

Mimaki™

File name

Cover flaps



1 side rollover

ACDS.1-2

File name

Cover flaps & lock

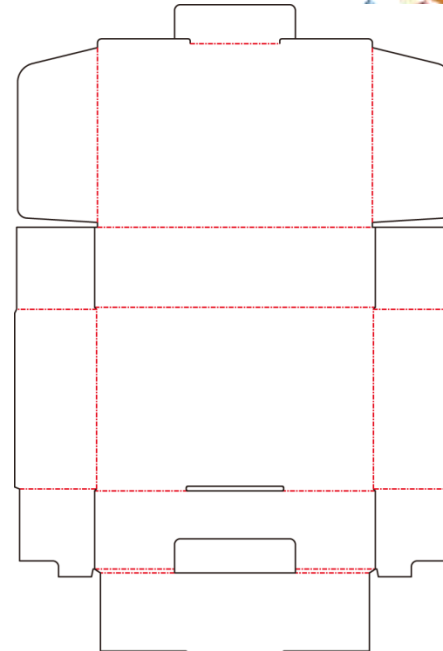
Corrugated

1 ArtiosCAD Corrugated

One piece containers

1 side rollover

Cover flaps & lock



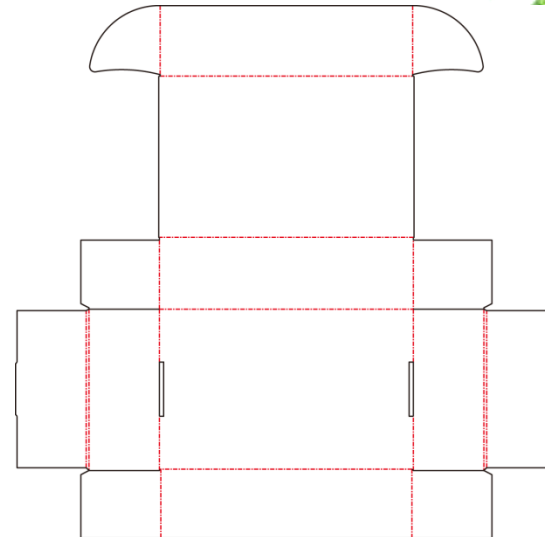
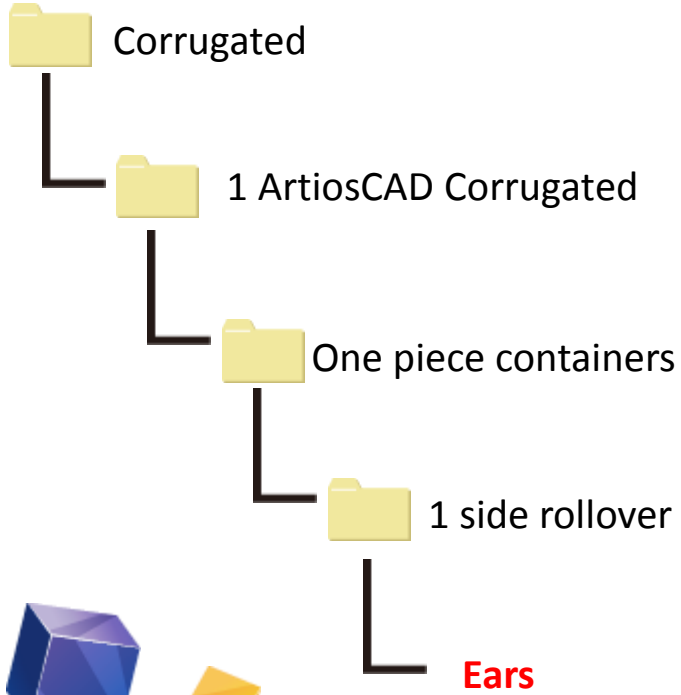
MIMAKI™

1 side rolover

ACDS.1-3

File name

Ears



Mimaki™

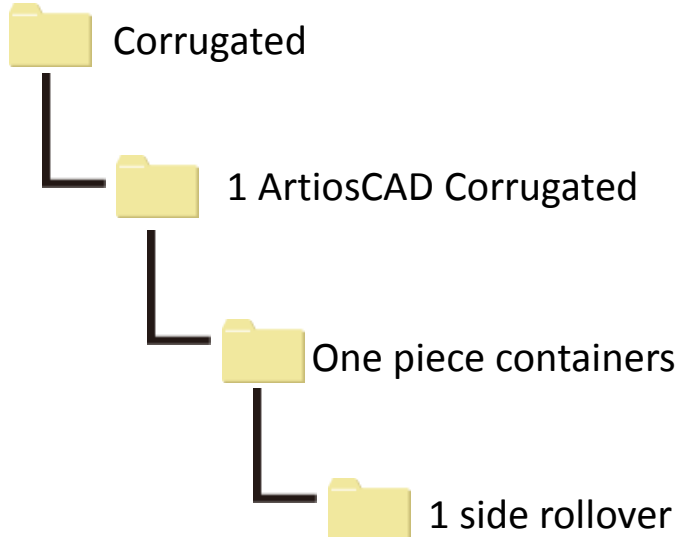
1 side rollover

ACDS.1-4

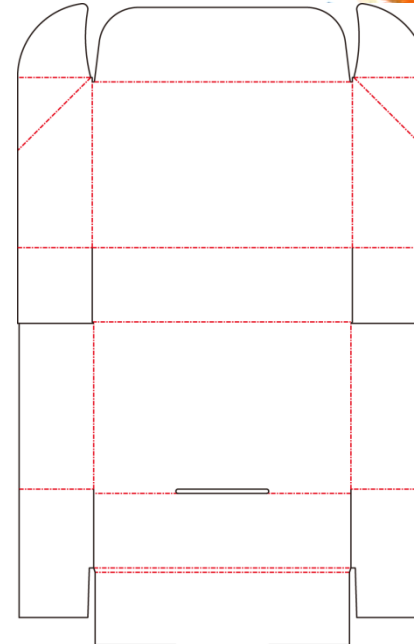
MIMAKI™

File name

Ears/dust flaps off
cover



Ears/dust flaps off cover



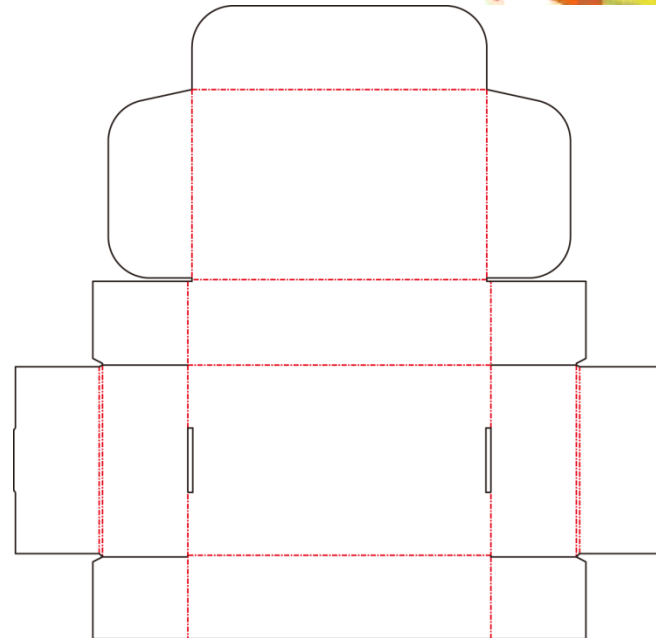
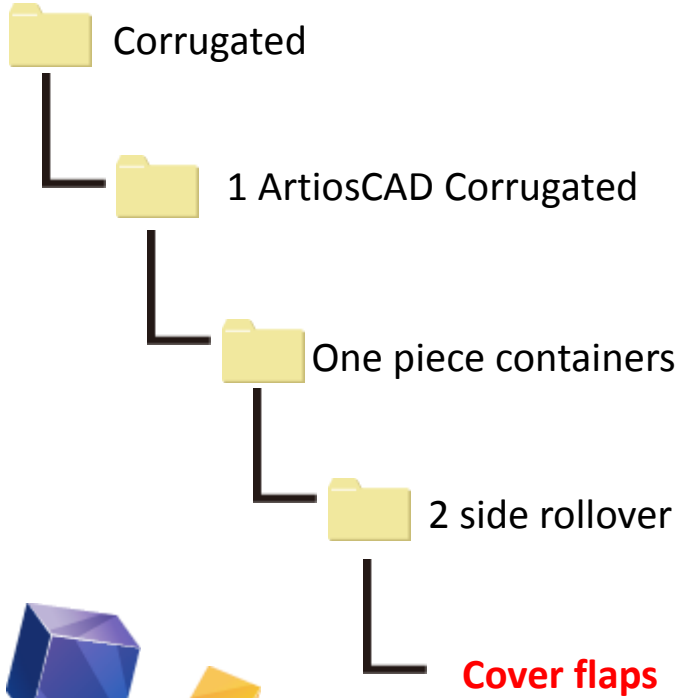
2 side rolover

ACDS.1-5

Mimaki™

File name

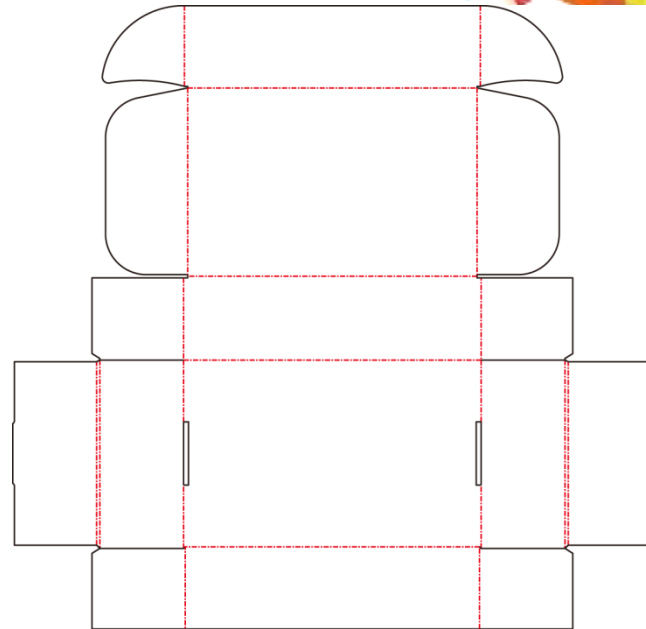
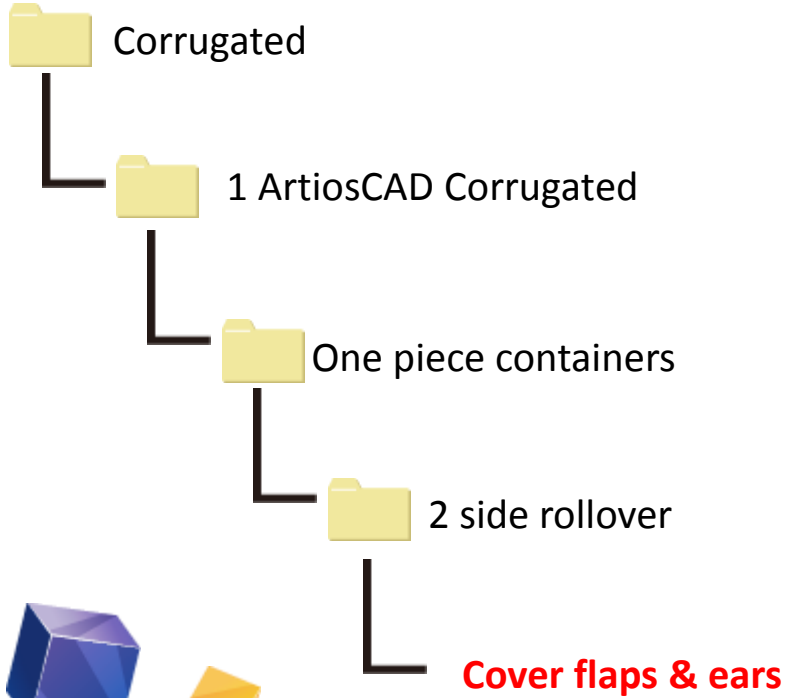
Cover flaps



2 side rolover

ACDS.1-6

File name
Cover flaps & ears



2 side rolover

ACDS.1-7

Mimaki™

File name

Cover panels meet

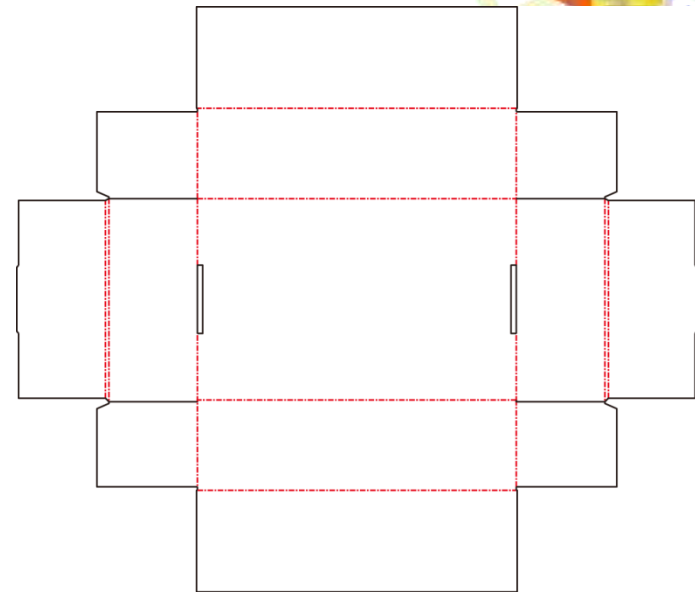
Corrugated

1 ArtiosCAD Corrugated

One piece containers

2 side rolover

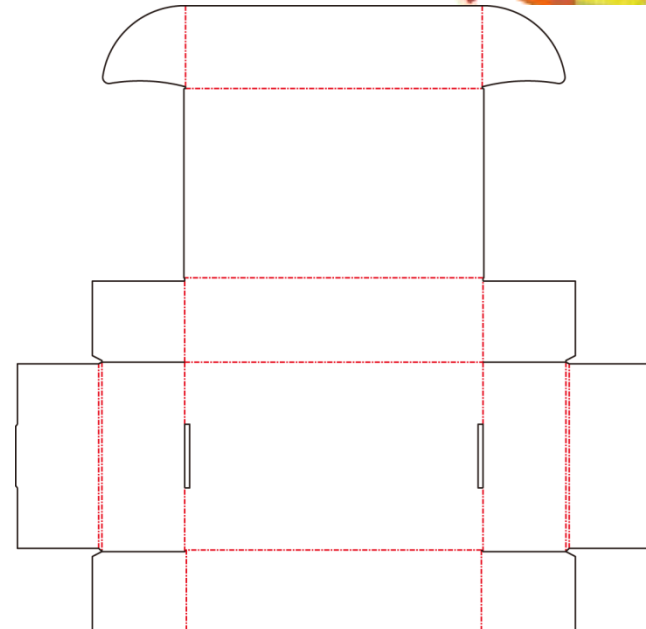
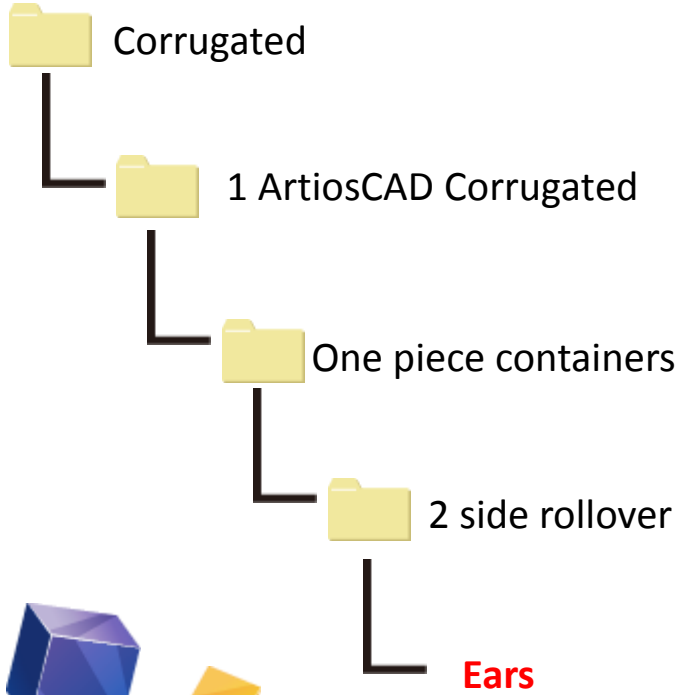
Cover panels meet



2 side rolover

ACDS.1-8

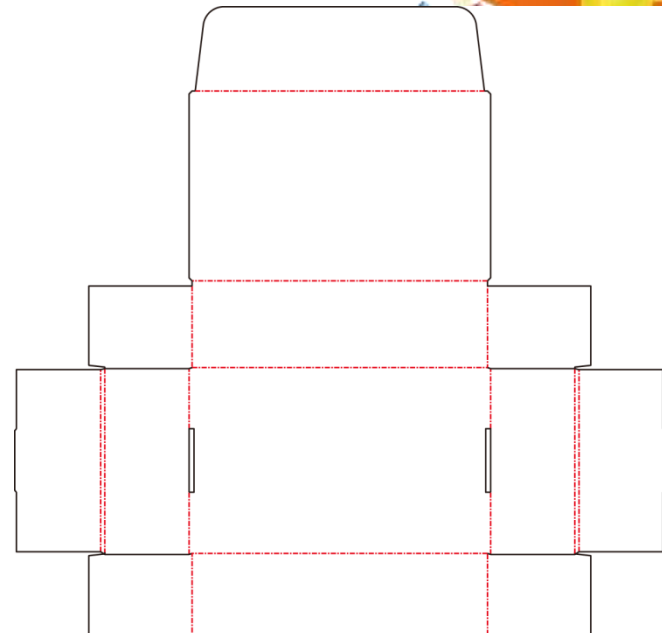
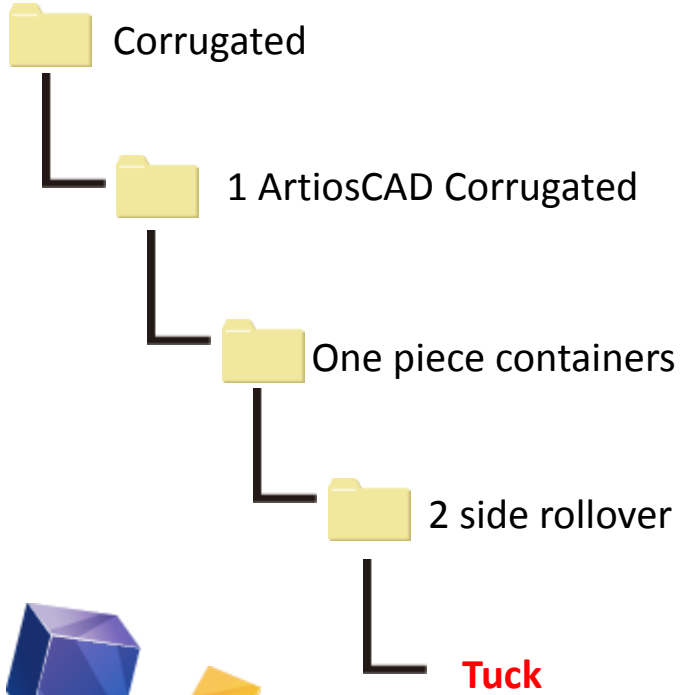
File name
Ears



2 side rolover

ACDS.1-9

File name
Tuck

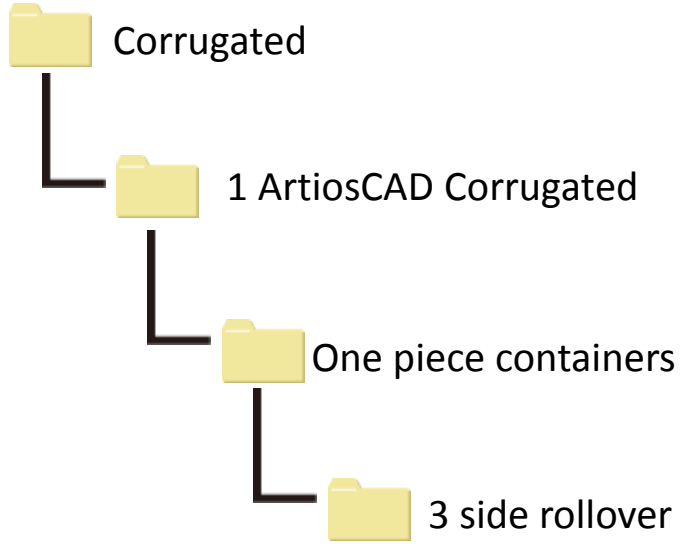


3 side rollover

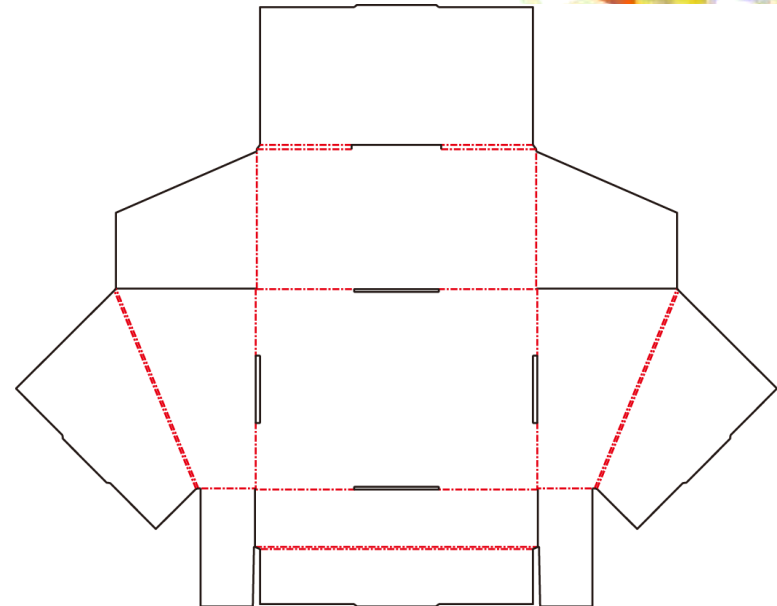
ACDS.1-10

File name

Angled side/header slots



Angled side/header slots



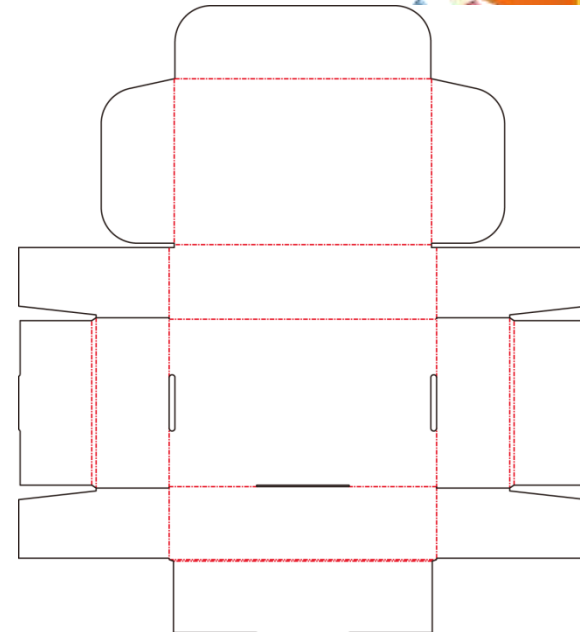
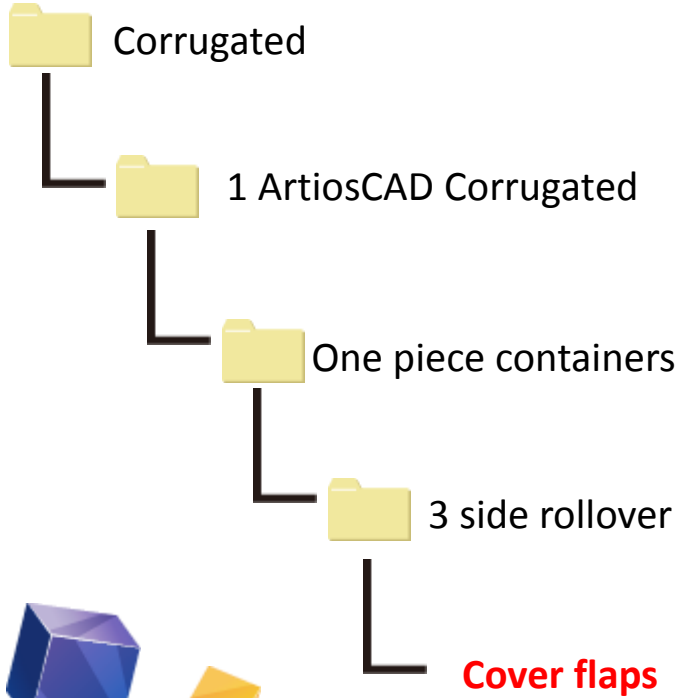
Mimaki

3 side rollover

ACDS.1-1

File name

Cover flaps

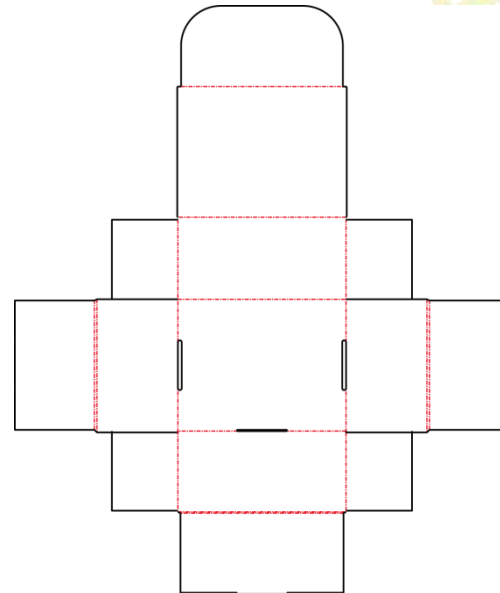
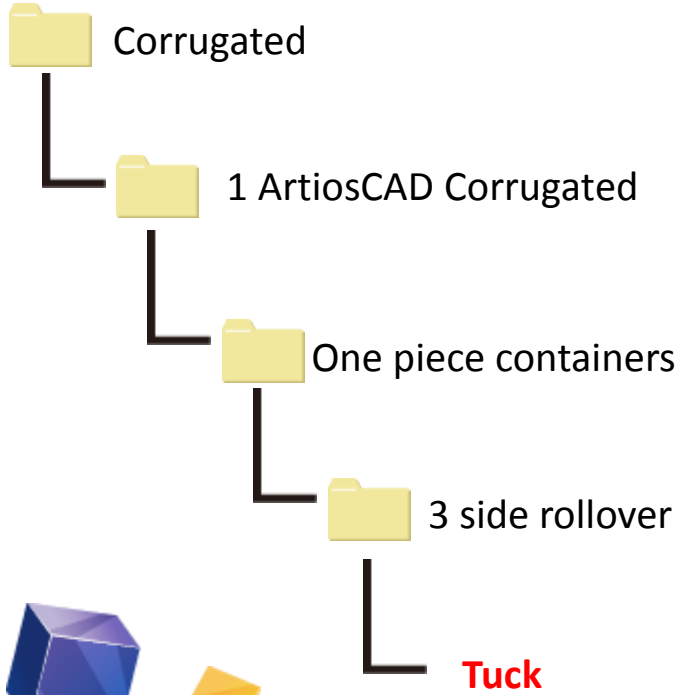


3 side rolover

ACDS.1-12

File name

Tuck

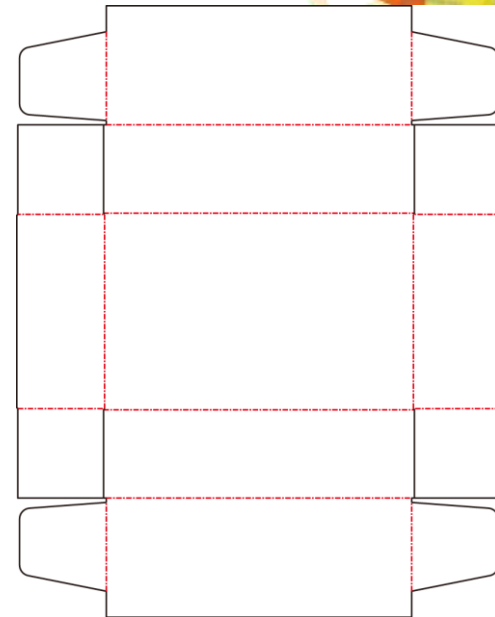
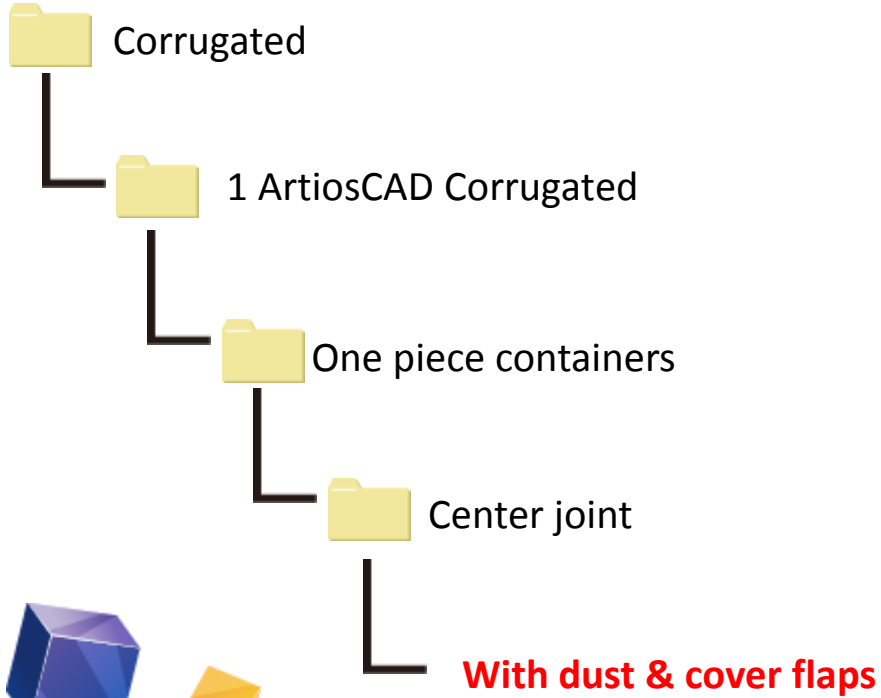


Center joint

ACDS.1-13

File name

With dust & cover flaps



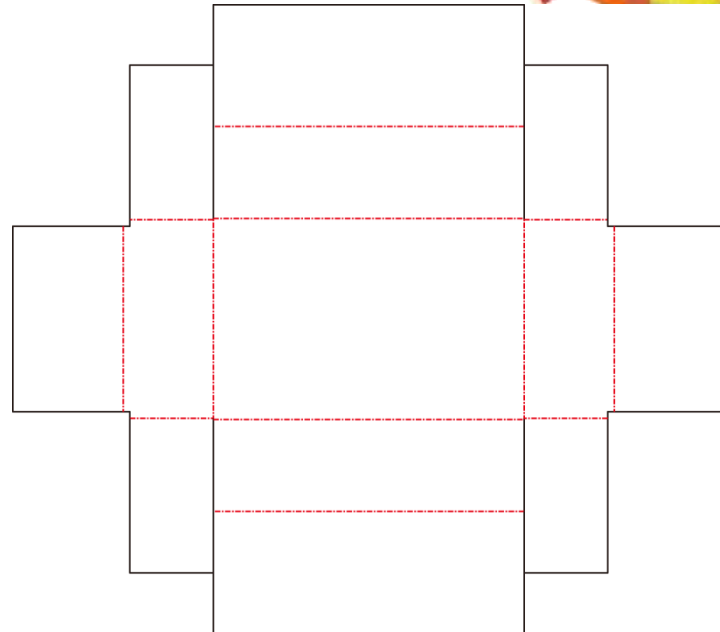
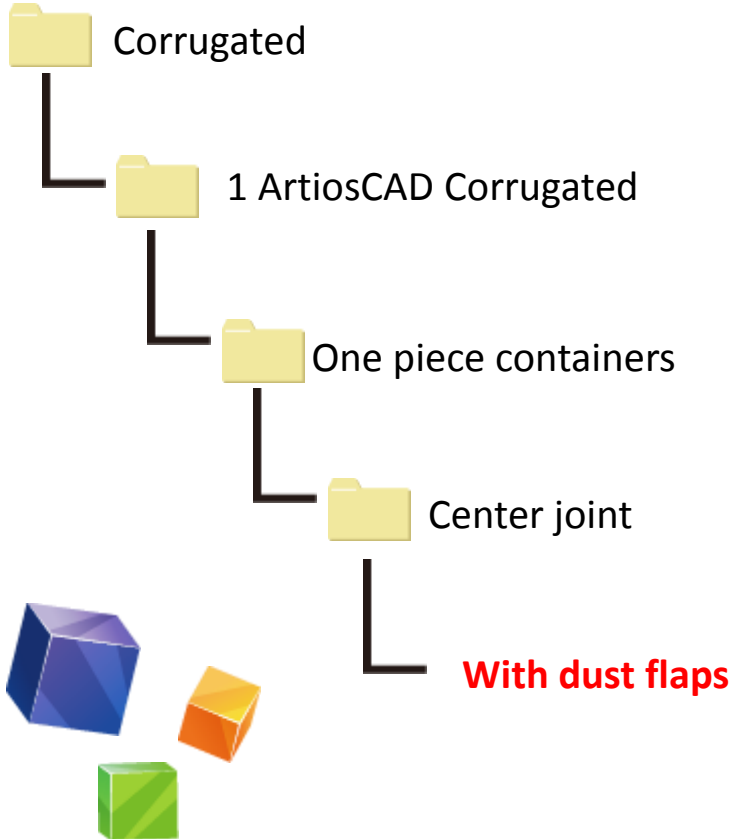
Mimaki™

Center joint

ACDS.1-14

File name

With dust flaps



MIMAKI™

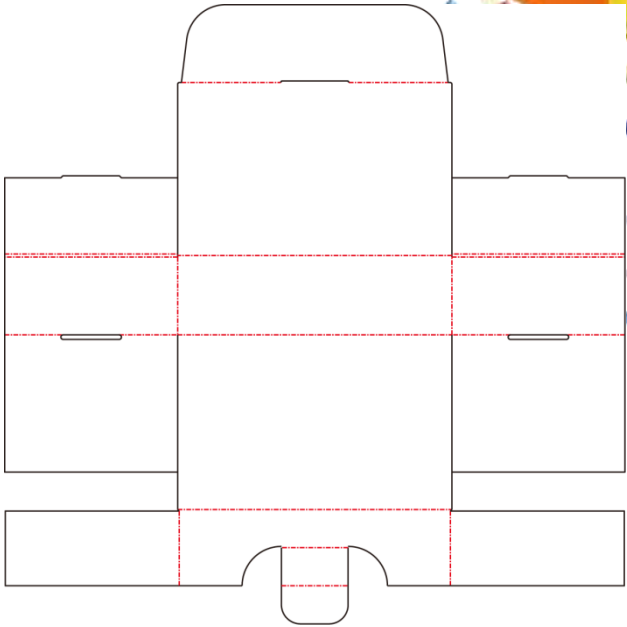
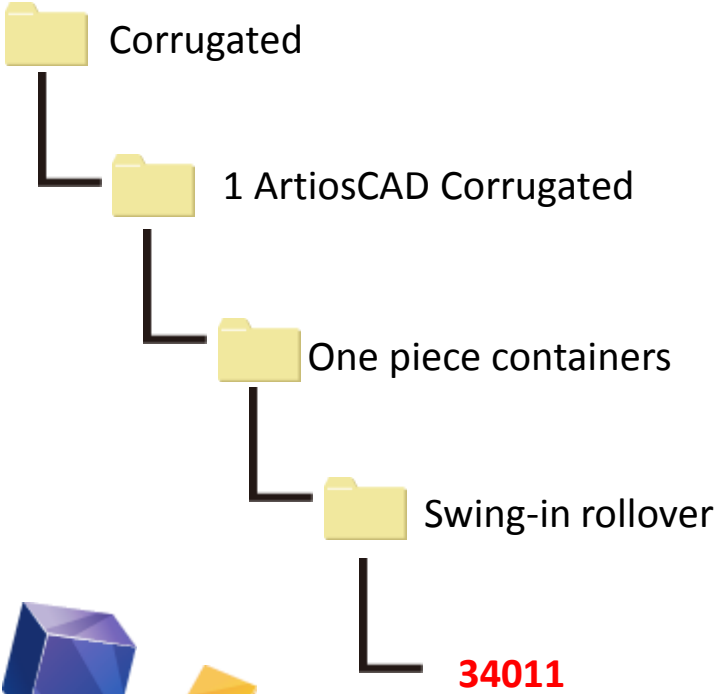
Swing-in rolover

ACDS.1-15



File name

34011



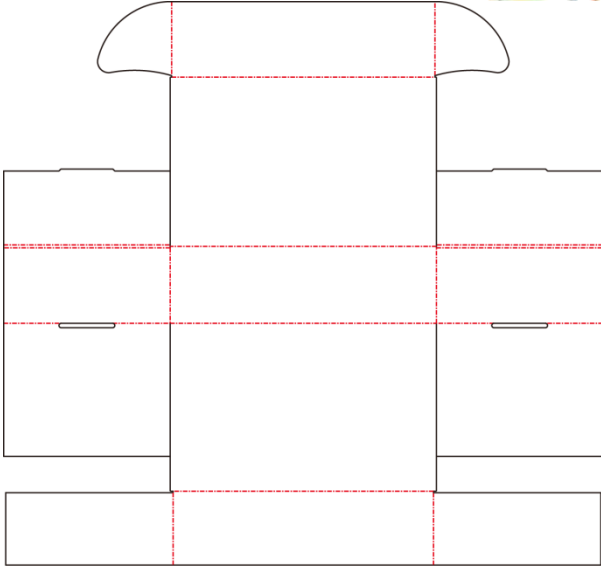
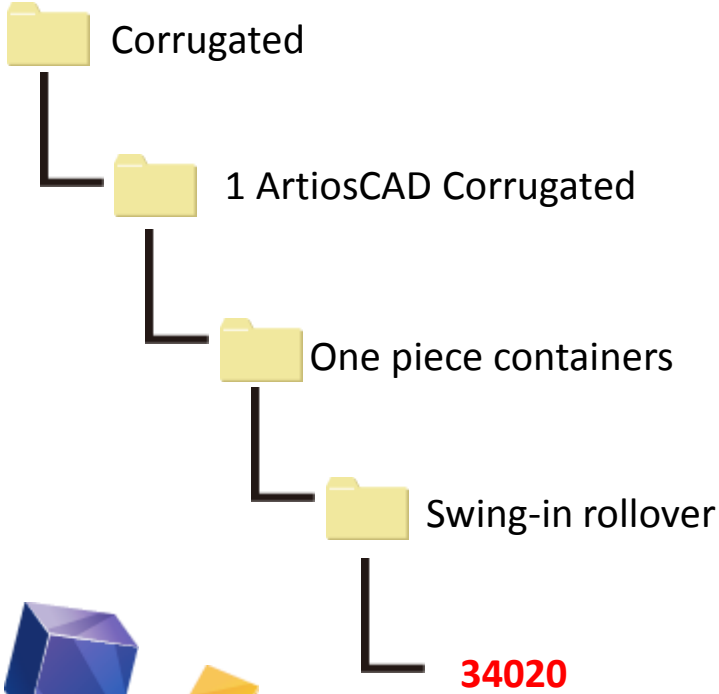
Swing-in rolover

ACDS.1-16



File name

34020



Swing-in rolover

ACDS.1-17

Mimaki™

File name
File name

Tuck

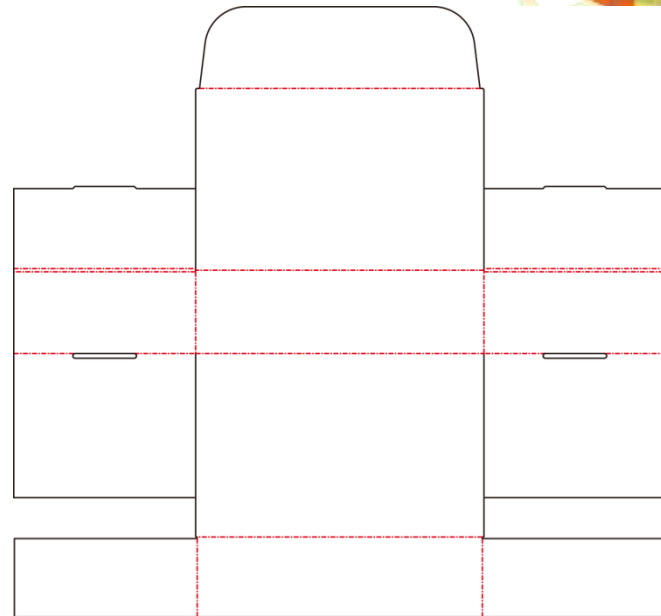
Corrugated

1 ArtiosCAD Corrugated

One piece containers

Swing-in rolover

Tuck

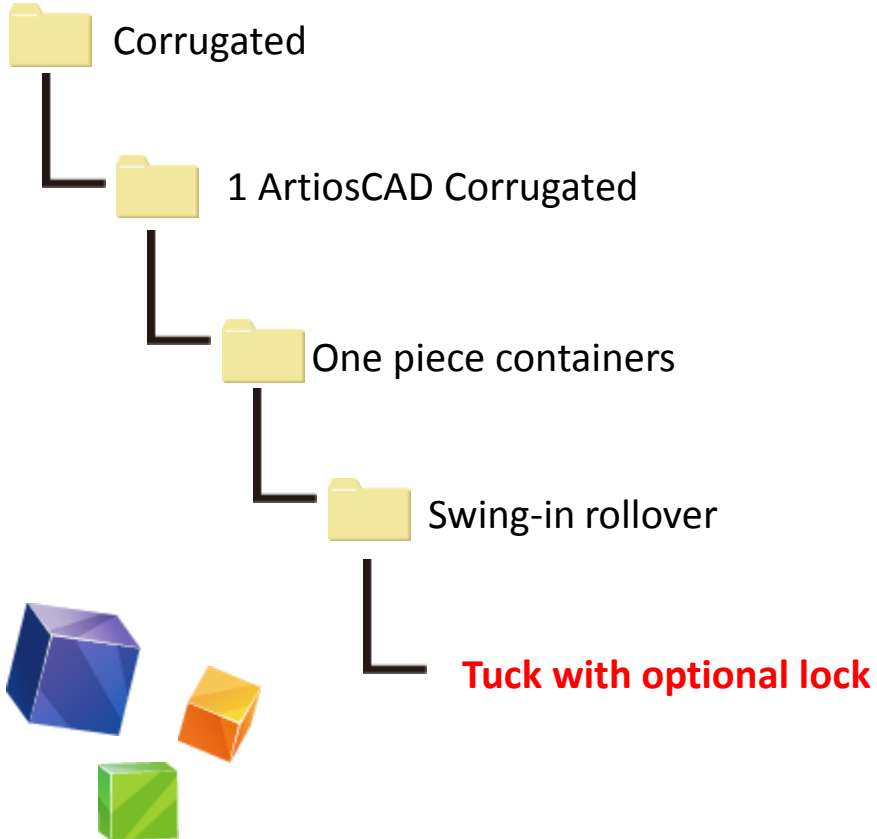


Wrap around

ACDS.1-18

File name

Tuck with optional lock



Wrap around

ACDS.1-19

File name

Tuck/cover flaps/opt, lock

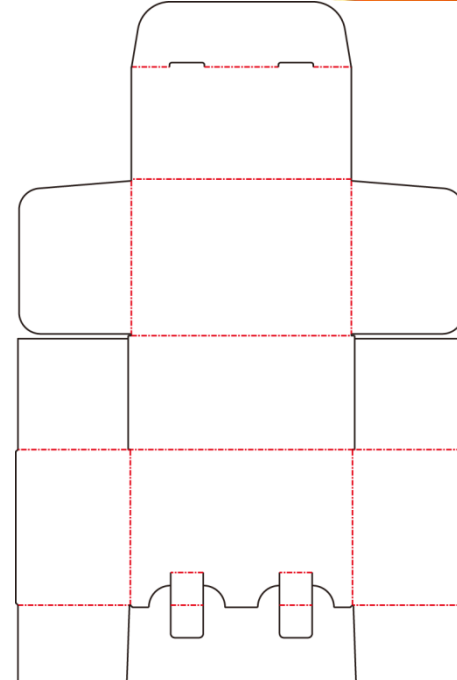
Corrugated

1 ArtiosCAD Corrugated

One piece containers

Swing-in rollover

Tuck/cover flaps/opt, lock



Mimaki™

Trays

ACDS.1-20

Mimaki™

File name

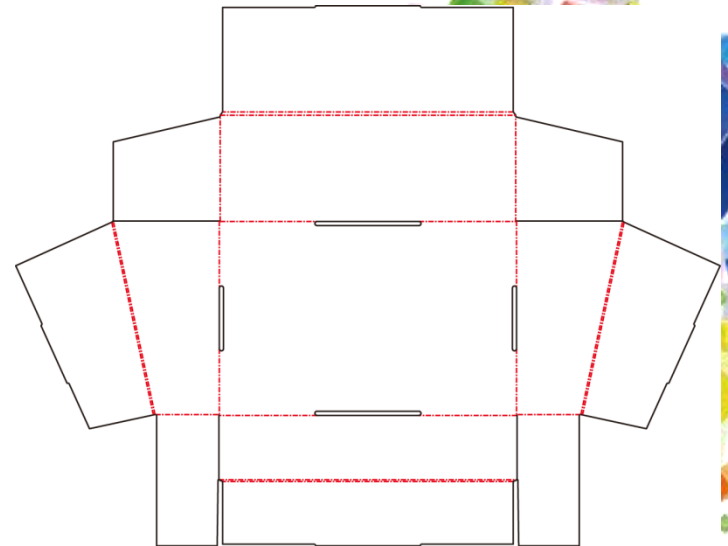
Angle side/with header slots

Corrugated

1 ArtiosCAD Corrugated

Trays

Angle side/with header slots

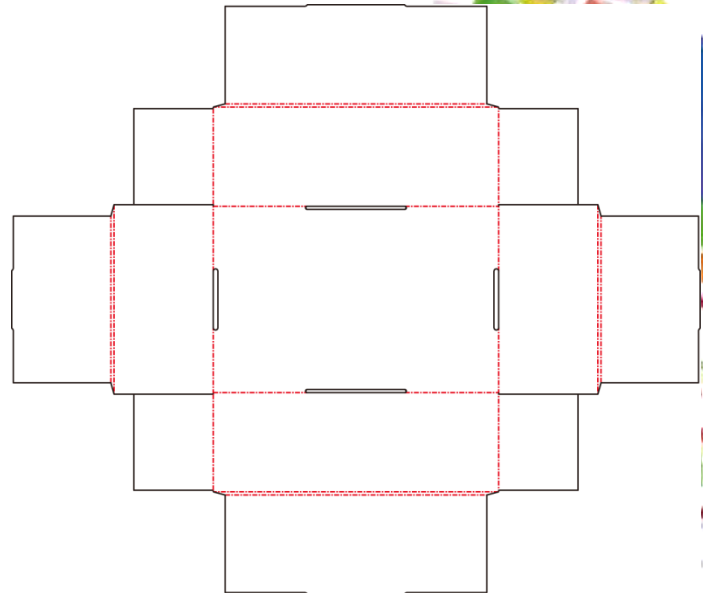
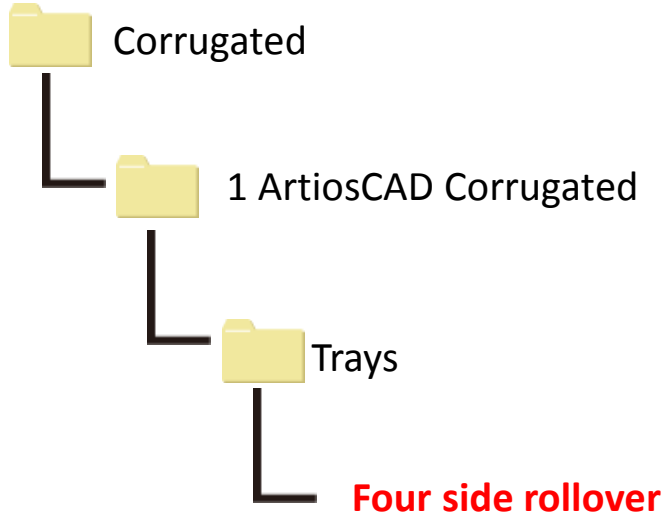


Trays

ACDS.1-21

File name

Four side rolover



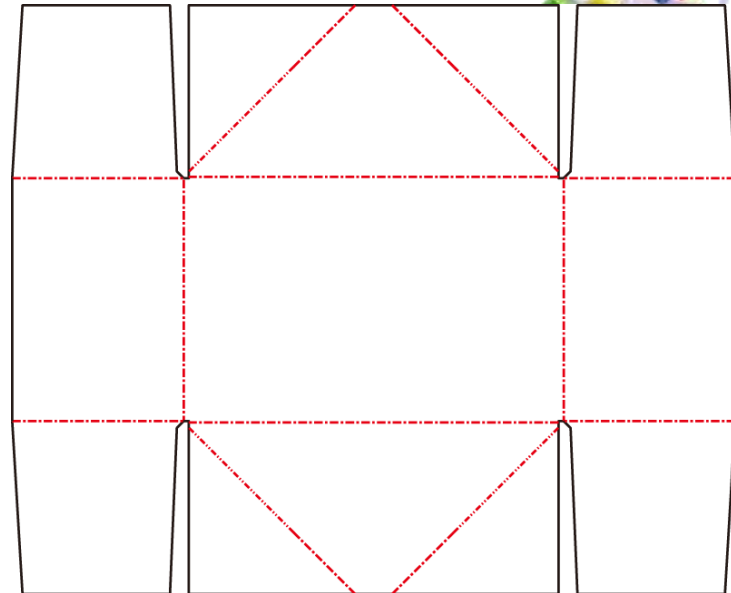
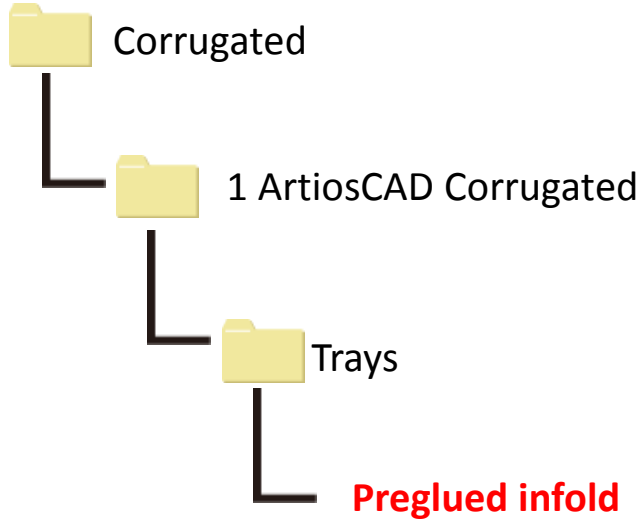
Mimaki™

Trays

ACDS.1-22

File name

Preglued infold

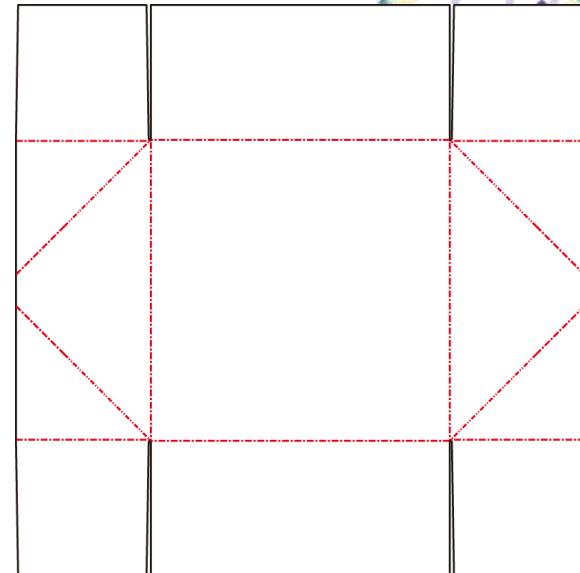
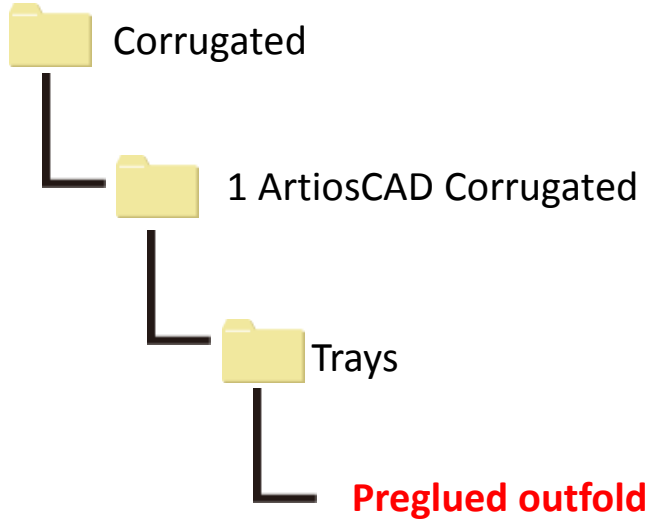


Trays

ACDS.1-23

File name

Preglued outfold



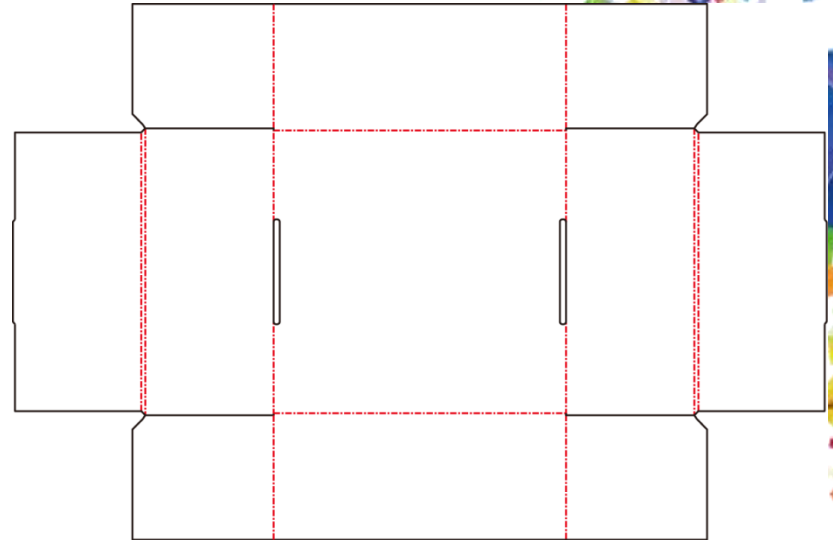
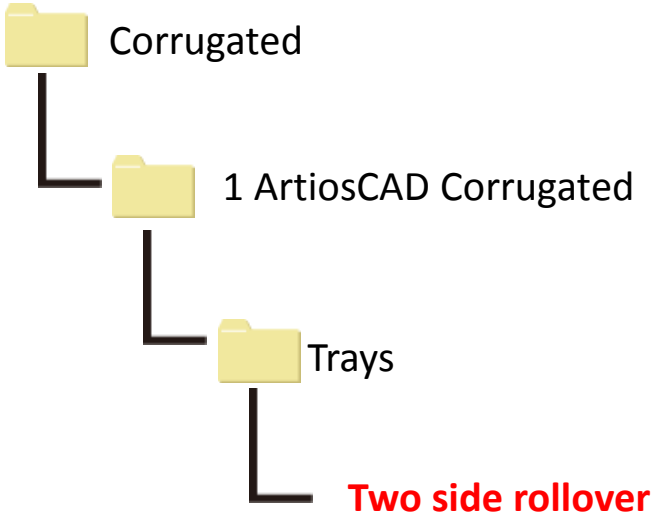
MIMAKI™

Trays

ACDS.1-24

File name

Two side rollover



MIMAKI™